

State of Wyoming Corner Record

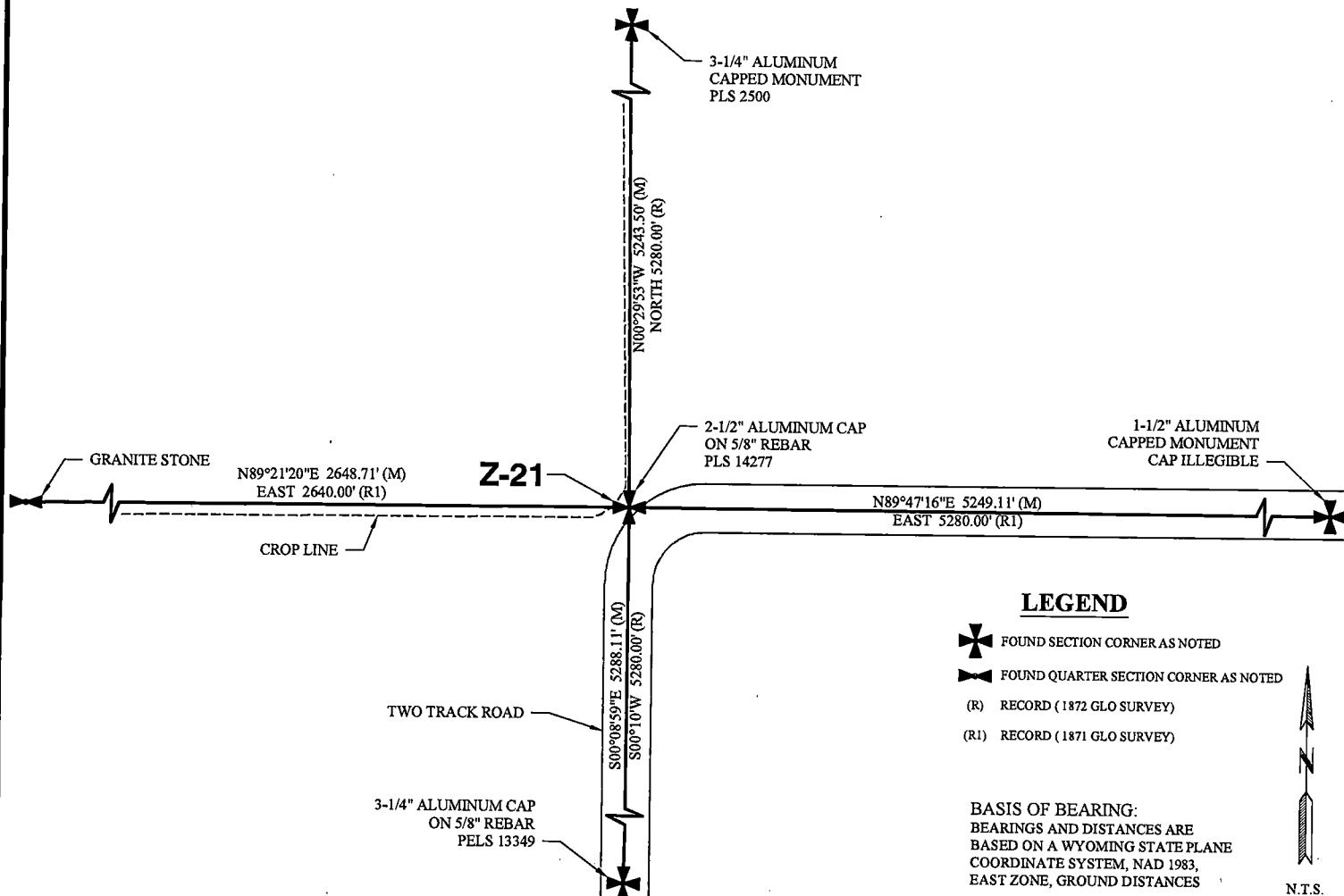
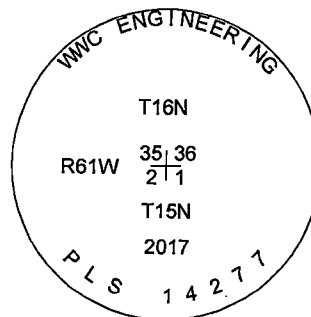
(In compliance with the CORNER PERPETUATION AND FILING ACT, Wyoming Statutes, 1997, Section 33-29-140, et seq., and the Rules and Regulations of the Board of Registration for Professional Engineers and Professional Land Surveyors)

Reverse side of this form may be used if more space is needed.

Record of original survey and citation of source of historical information (if corner is lost or obliterated.) Description of corner monumentation evidence found and/or monument and accessories established to perpetuate the location of this corner. Sketch of relative location of monument, accessories, and reference points with course and distance to adjacent corner(s) (if determined in this survey). Method and rationale for reestablishment of lost or obliterated corner.

EVIDENCE RECORD: 1871 GLO Survey: East along the south boundary of section 35, 80.00 chains. Set a granite boulder 17"x8"x7" for corner to sections 35, 36, 1 & 2.

EVIDENCE FOUND: July 2017: Granite boulder from 1871 GLO survey not found. Found a nail set 2" below ground surface at intersection of two track roads extending east & south and crop lines extending north & west. Accepted as best available evidence for the corner to sections 35, 36, 1 & 2. Set a 2 1/2" aluminum cap marked as shown on a 5/8" rebar, 26" long, 7" below ground surface at position of found nail and set nail alongside.



LEGEND

- FOUND SECTION CORNER AS NOTED
- FOUND QUARTER SECTION CORNER AS NOTED
- (R) RECORD (1872 GLO SURVEY)
- (R1) RECORD (1871 GLO SURVEY)

BASIS OF BEARING:
BEARINGS AND DISTANCES ARE BASED ON A WYOMING STATE PLANE COORDINATE SYSTEM, NAD 1983, EAST ZONE, GROUND DISTANCES

N.T.S.

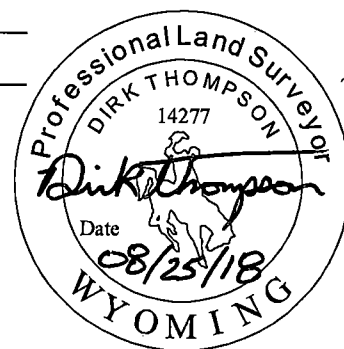
Date of Field Work: July 31, 2017 Office Reference: 2017-135

CROSS INDEX DIAGRAM

	1	2	3	4	5	6	7	8	9	10	11	12	13	14	15	16	17	18	19	20	21	22	23	24	25
A																									
B																									
C		6																							
D			5																						
E				4																					
F					3																				
G						2																			
H							1																		
J																									
K																									
L																									
M																									
N																									
O																									
P																									
Q																									
R																									
S																									
T																									
U																									
V																									
W																									
X																									
Y																									
Z																									

Land Surveyor / Firm / Address
Dirk Thompson
 WWC Engineering
 1849 Terra Avenue
 Sheridan, WY 82801
 Telephone: (307) 672-0761

This corner record was prepared by me or under my direction and supervision.
SEAL & SIGNATURE



RECP #: 739877
 RECORDED 10/1/2018 AT 1:31 PM BK# 2598 PG# 311
 Debra K. Lee, CLERK OF LARAMIE COUNTY, WY. PAGE 1 OF 1

Corner Name: Southeast Corner Section: 35 T 16N R 61W; 6TH P.M. Cross-Index No.: Z-21
 SBRPEPLS/PLSW: March 1994; PLSW January 1998